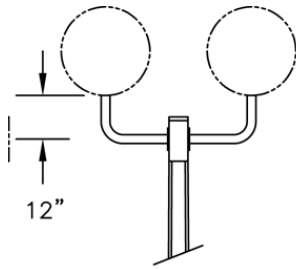




Centrecon Series

MBO Pole with MAS Top Mount

Medium Base Plate Octagonal Pole with Aluminum Side Mount Fixture(s)



**BULLHORN STYLE
USE "B" SUFFIX**

BULLHORN STYLE

Luminaire Orientation	Arm Code
1 @ 0	MASB1
2 @ 180	MASB2
2 @ 90	MASB29
3 @ 90	MASB39
4 @ 90	MASB49

SPECIFICATIONS

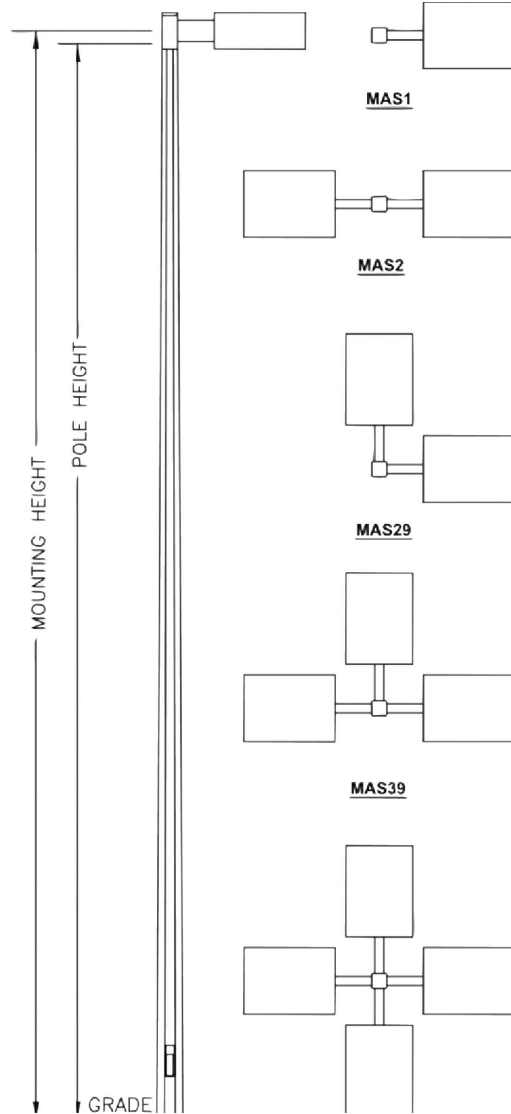
Use Centrecon Specifications.

COLORS & FINISHES

See Color Selection Guide.

ANTI-GRAFFITI & SEALER

Optional Coatings available for added protection.



BASE PLATE STYLE OCTAGONAL POLES



Pole & Arm Configuration Includes Finish Code	Mounting Height	Pole Height	Base OD	Bolt Circle	Base Plate (sq.)	Luminaire Orientation	Max. 50 lb. Luminaire EPA at 90 mph.	Pole Weight
MBO03*113A-MAS1UN	10'-4"	9'-10"	6-7/16"	11-1/2"	11"	1 @ 0	9.0 sq. ft.	250 lbs.
MBO03*113A-MAS2UN	10'-4"	9'-10"	6-7/16"	11-1/2"	11"	2 @ 180	6.0 sq. ft.	250 lbs.
MBO03*113A-MAS29UN	10'-4"	9'-10"	6-7/16"	11-1/2"	11"	2 @ 90	6.0 sq. ft.	250 lbs.
MBO03*113A-MAS39UN	10'-4"	9'-10"	6-7/16"	11-1/2"	11"	3 @ 90	4.0 sq. ft.	250 lbs.
MBO03*113A-MAS49UN	10'-4"	9'-10"	6-7/16"	11-1/2"	11"	4 @ 90	4.0 sq. ft.	250 lbs.
MBO04.3*113A-MAS1UN	14'-7"	14'-1"	6-13/16"	11-1/2"	11"	1 @ 0	9.0 sq. ft.	400 lbs.
MBO04.3*113A-MAS2UN	14'-7"	14'-1"	6-13/16"	11-1/2"	11"	2 @ 180	6.0 sq. ft.	400 lbs.
MBO04.3*113A-MAS29UN	14'-7"	14'-1"	6-13/16"	11-1/2"	11"	2 @ 90	6.0 sq. ft.	400 lbs.
MBO04.3*113A-MAS39UN	14'-7"	14'-1"	6-13/16"	11-1/2"	11"	3 @ 90	4.0 sq. ft.	400 lbs.
MBO04.3*113A-MAS49UN	14'-7"	14'-1"	6-13/16"	11-1/2"	11"	4 @ 90	4.0 sq. ft.	400 lbs.
MBO06*113A-MAS1UN	20'-2"	19'-8"	7-1/2"	11-1/2"	11"	1 @ 0	9.0 sq. ft.	600 lbs.
MBO06*113A-MAS2UN	20'-2"	19'-8"	7-1/2"	11-1/2"	11"	2 @ 180	6.0 sq. ft.	600 lbs.
MBO06*113A-MAS29UN	20'-2"	19'-8"	7-1/2"	11-1/2"	11"	2 @ 90	6.0 sq. ft.	600 lbs.
MBO06*113A-MAS39UN	20'-2"	19'-8"	7-1/2"	11-1/2"	11"	3 @ 90	4.0 sq. ft.	600 lbs.
MBO06*113A-MAS49UN	20'-2"	19'-8"	7-1/2"	11-1/2"	11"	4 @ 90	4.0 sq. ft.	600 lbs.

Manufacturer reserves the right to alter the product design without prior notice. Consult Ameron or authorized representative for additional information.

MBO Pole with MAS Top Mount Combinations

Pole & Arm Configuration Includes Finish Code	Mounting Height	Pole Height	Base OD	Bolt Circle	Base Plate (SQ.)	Luminaire Orientation	Max. 50 lb. Luminaire EPA at 90 mph.	Pole Weight
MBO07*113A-MAS1UN	23'-6"	23'-0"	7-7/8"	11-1/2"	11"	1 @ 0	9.0 sq. ft.	740 lbs.
MBO07*113A-MAS2UN	23'-6"	23'-0"	7-7/8"	11-1/2"	11"	2 @ 180	6.0 sq. ft.	740 lbs.
MBO07*113A-MAS29UN	23'-6"	23'-0"	7-7/8"	11-1/2"	11"	2 @ 90	6.0 sq. ft.	740 lbs.
MBO07*113A-MAS39UN	23'-6"	23'-0"	7-7/8"	11-1/2"	11"	3 @ 90	4.0 sq. ft.	740 lbs.
MBO07*113A-MAS49UN	23'-6"	23'-0"	7-7/8"	11-1/2"	11"	4 @ 90	4.0 sq. ft.	740 lbs.
MBO07.5*113A-MAS1UN	25'-1"	24'-7"	8-1/16"	11-1/2"	11"	1 @ 0	9.0 sq. ft.	790 lbs.
MBO07.5*113A-MAS2UN	25'-1"	24'-7"	8-1/16"	11-1/2"	11"	2 @ 180	6.0 sq. ft.	790 lbs.
MBO07.5*113A-MAS29UN	25'-1"	24'-7"	8-1/16"	11-1/2"	11"	2 @ 90	6.0 sq. ft.	790 lbs.
MBO07.5*113A-MAS39UN	25'-1"	24'-7"	8-1/16"	11-1/2"	11"	3 @ 90	4.0 sq. ft.	790 lbs.
MBO07.5*113A-MAS49UN	25'-1"	24'-7"	8-1/16"	11-1/2"	11"	4 @ 90	4.0 sq. ft.	790 lbs.
MBO08*113A-MAS1UN	26'-9"	26'-3"	8-1/4"	11-1/2"	11"	1 @ 0	9.0 sq. ft.	900 lbs.
MBO08*113A-MAS2UN	26'-9"	26'-3"	8-1/4"	11-1/2"	11"	2 @ 180	6.0 sq. ft.	900 lbs.
MBO08*113A-MAS29UN	26'-9"	26'-3"	8-1/4"	11-1/2"	11"	2 @ 90	6.0 sq. ft.	900 lbs.
MBO08*113A-MAS39UN	26'-9"	26'-3"	8-1/4"	11-1/2"	11"	3 @ 90	4.0 sq. ft.	900 lbs.
MBO08*113A-MAS49UN	26'-9"	26'-3"	8-1/4"	11-1/2"	11"	4 @ 90	4.0 sq. ft.	900 lbs.
MBO08.5*113A-MAS1UN	28'-5"	27'-11"	8-7/16"	11-1/2"	11"	1 @ 0	9.0 sq. ft.	960 lbs.
MBO08.5*113A-MAS2UN	28'-5"	27'-11"	8-7/16"	11-1/2"	11"	2 @ 180	6.0 sq. ft.	960 lbs.
MBO08.5*113A-MAS29UN	28'-5"	27'-11"	8-7/16"	11-1/2"	11"	2 @ 90	6.0 sq. ft.	960 lbs.
MBO08.5*113A-MAS39UN	28'-5"	27'-11"	8-7/16"	11-1/2"	11"	3 @ 90	4.0 sq. ft.	960 lbs.
MBO08.5*113A-MAS49UN	28'-5"	27'-11"	8-7/16"	11-1/2"	11"	4 @ 90	4.0 sq. ft.	960 lbs.
MBO09*113A-MAS1UN	30'-0"	29'-6"	8-5/8"	11-1/2"	11"	1 @ 0	9.0 sq. ft.	1,000 lbs.
MBO09*113A-MAS2UN	30'-0"	29'-6"	8-5/8"	11-1/2"	11"	2 @ 180	6.0 sq. ft.	1,000 lbs.
MBO09*113A-MAS29UN	30'-0"	29'-6"	8-5/8"	11-1/2"	11"	2 @ 90	6.0 sq. ft.	1,000 lbs.
MBO09*113A-MAS39UN	30'-0"	29'-6"	8-5/8"	11-1/2"	11"	3 @ 90	4.0 sq. ft.	1,000 lbs.
MBO09*113A-MAS49UN	30'-0"	29'-6"	8-5/8"	11-1/2"	11"	4 @ 90	4.0 sq. ft.	1,000 lbs.
MBOX09.5*113A-MAS1UN	31'-8"	31'-2"	8-7/8"	11-1/2"	11"	1 @ 0	9.0 sq. ft.	1,100 lbs.
MBOX09.5*113A-MAS2UN	31'-8"	31'-2"	8-7/8"	11-1/2"	11"	2 @ 180	6.0 sq. ft.	1,100 lbs.
MBOX09.5*113A-MAS29UN	31'-8"	31'-2"	8-7/8"	11-1/2"	11"	2 @ 90	6.0 sq. ft.	1,100 lbs.
MBOX09.5*113A-MAS39UN	31'-8"	31'-2"	8-7/8"	11-1/2"	11"	3 @ 90	4.0 sq. ft.	1,100 lbs.
MBOX09.5*113A-MAS49UN	31'-8"	31'-2"	8-7/8"	11-1/2"	11"	4 @ 90	4.0 sq. ft.	1,100 lbs.
MBOX10*113A-MAS1UN	33'-4"	32'-10"	9-1/16"	11-1/2"	11"	1 @ 0	9.0 sq. ft.	1,300 lbs.
MBOX10*113A-MAS2UN	33'-4"	32'-10"	9-1/16"	11-1/2"	11"	2 @ 180	6.0 sq. ft.	1,300 lbs.
MBOX10*113A-MAS29UN	33'-4"	32'-10"	9-1/16"	11-1/2"	11"	2 @ 90	6.0 sq. ft.	1,300 lbs.
MBOX10*113A-MAS39UN	33'-4"	32'-10"	9-1/16"	11-1/2"	11"	3 @ 90	4.0 sq. ft.	1,300 lbs.
MBOX10*113A-MAS49UN	33'-4"	32'-10"	9-1/16"	11-1/2"	11"	4 @ 90	4.0 sq. ft.	1,300 lbs.
MBOX10.6*113A-MAS1UN	35'-3"	34'-9"	9-5/16"	14"	13"	1 @ 0	9.0 sq. ft.	1,375 lbs.
MBOX10.6*113A-MAS2UN	35'-3"	34'-9"	9-5/16"	14"	13"	2 @ 180	6.0 sq. ft.	1,375 lbs.
MBOX10.6*113A-MAS29UN	35'-3"	34'-9"	9-5/16"	14"	13"	2 @ 90	6.0 sq. ft.	1,375 lbs.
MBOX10.6*113A-MAS39UN	35'-3"	34'-9"	9-5/16"	14"	13"	3 @ 90	4.0 sq. ft.	1,375 lbs.
MBOX10.6*113A-MAS49UN	35'-3"	34'-9"	9-5/16"	14"	13"	4 @ 90	4.0 sq. ft.	1,375 lbs.
MBOX11.7*113A-MAS1UN	38'-11"	38'-5"	9-3/4"	14"	13"	1 @ 0	9.0 sq. ft.	1,600 lbs.
MBOX11.7*113A-MAS2UN	38'-11"	38'-5"	9-3/4"	14"	13"	2 @ 180	4.5 sq. ft.	1,600 lbs.
MBOX11.7*113A-MAS29UN	38'-11"	38'-5"	9-3/4"	14"	13"	2 @ 90	4.5 sq. ft.	1,600 lbs.
MBOX11.7*113A-MAS39UN	38'-11"	38'-5"	9-3/4"	14"	13"	3 @ 90	3.0 sq. ft.	1,600 lbs.
MBOX11.7*113A-MAS49UN	38'-11"	38'-5"	9-3/4"	14"	13"	4 @ 90	3.0 sq. ft.	1,600 lbs.

Standard Anchor Bolts: 1" x 36" x 4" (Purchase Separately)

Pole & Arm Designator Layout

